

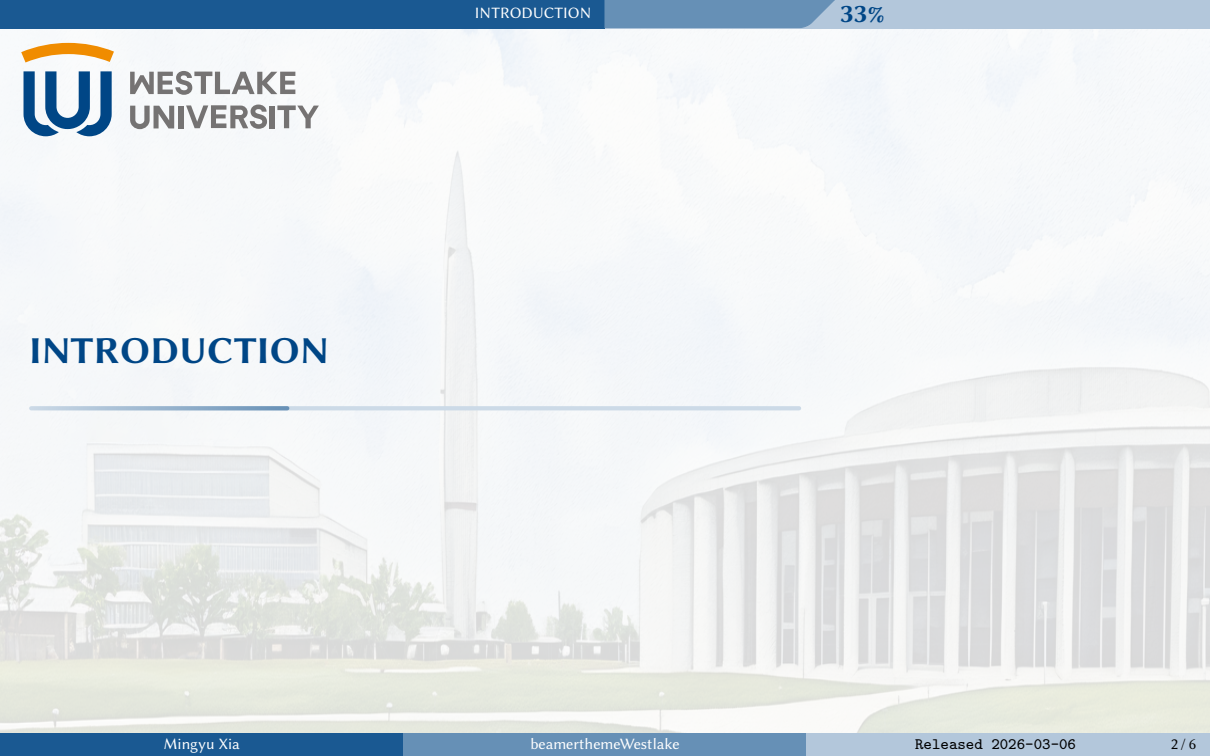
Westlake Beamer Theme

Mingyu Xia <xiamingyu@westlake.edu.cn>

Released 2026-03-06



INTRODUCTION



Theme Introduction

This is the Westlake Beamer Theme. Different from the basic beamer class, this theme provides

Highlights

- Decorations at the bottom of the homepage;
- Progress bar with percentage at the north east corner of every slide and section pages;
- Interfaces for modifying the logo, backgrounds, etc.

The meaning of Westlake

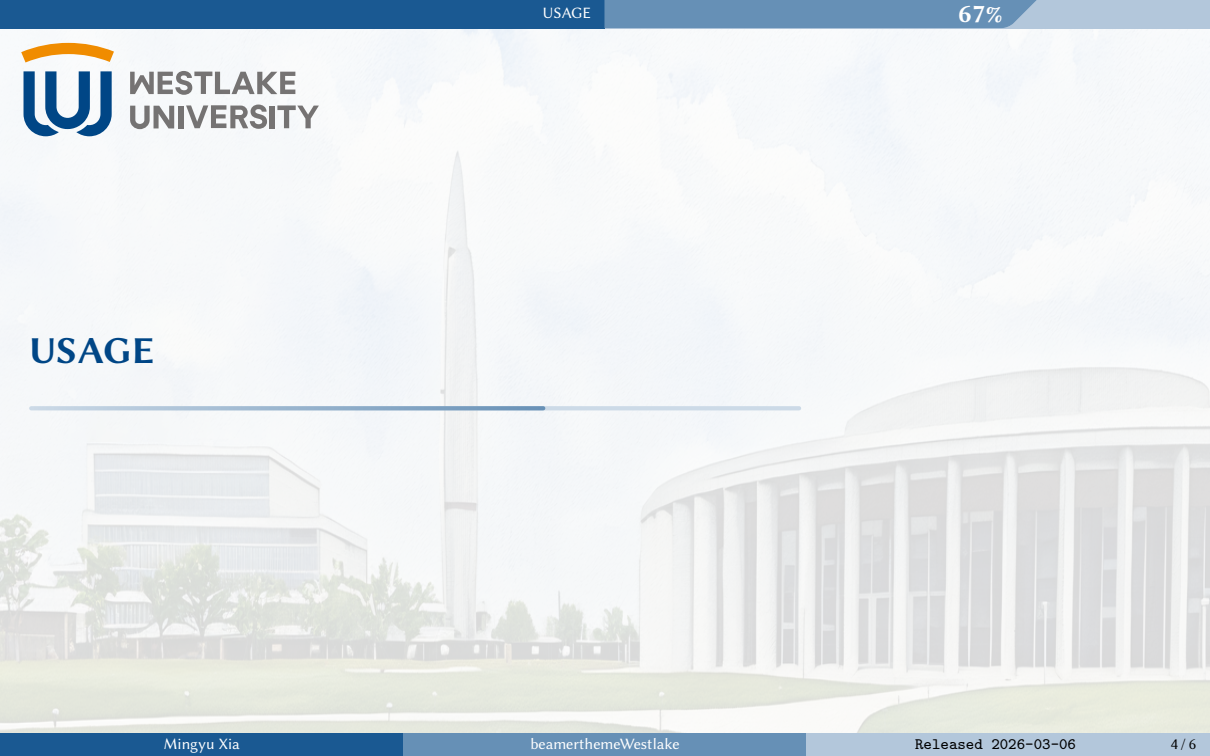
A freshwater lake

West Lake, also known as Xihu and by other names, is a freshwater lake in Hangzhou, China. Situated to the west of Hangzhou's former walled city, the lake has a surface area of 6.39 km^2 (2.47 mi^2),^[1] stretching 3.2 km (2.0 mi) from north to south and 2.8 km (1.7 mi) from east to west.^[2]

A private research university

Westlake University is a private research university in Hangzhou, Zhejiang, China.

USAGE



User Interface

To load this package, under the beamer class, write the line

```
\usetheme[⟨keys⟩]{westlake}
```

where the supported keys are

- **themeRGB** = $\langle num, num, num \rangle$ to config the RGB values (ranges between 0 to 1) of the theme color (Default: {0, 70, 134}).
- **lbadge**, **rbadge**, **logobg**, **mainbg**, **basebg** = $\langle file \rangle$ to config the graphic files for
 - logo: appears at the right side of every slide,
 - lbadge/rbadge: appears at the north west/east corner of homepage and section pages,
 - main background: appears on homepage and section pages, and
 - base background: appears on other pages, respectively.
- **logobg.op**, **mainbg.op**, **basebg.op** = $\langle fp\ num \rangle$ to config the opacity of the corresponding graphic (Default: 0.1, 0.16, 0.8).

Reference

[1] Zhejiang Provincial Bureau of Surveying and Mapping. 2010-09-30.

[2] Overview of the West Lake. Hangzhou Chronicles. Zhonghua Book Company. 1995.



Thanks for Listening! Any Questions?

